

ATTRIBUTES

Diversified Bond Fund

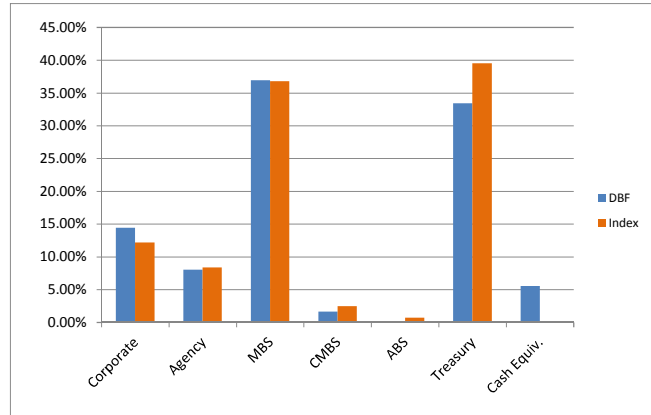
Acct. # 2658063
As of October 31, 2014

	Diversified Bond Fund	Barclay's U.S. Int Agg xBaa	Difference
Current Yield	2.80%	2.76%	0.04%
Yield to Maturity	1.42%	1.86%	-0.44%
Wgtd. Avg. Maturity*	4.13	4.61	-0.48
Effective Duration	3.74	4.06	-0.32
Wgtd. Avg. Quality**	Aa1	Aa1	
Portfolio Size (millions)	\$577.8	\$13,620.8	
Number of Securities	148	4,891	

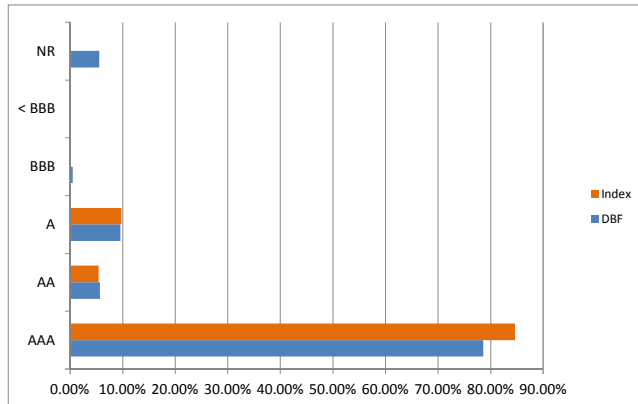
*Average life is used for maturity on securitized securities

**Moody's Credit ratings

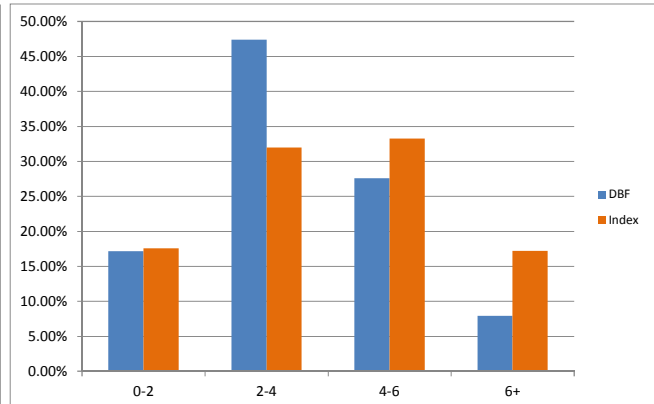
Sector Allocation



Credit Quality



Duration



PERFORMANCE

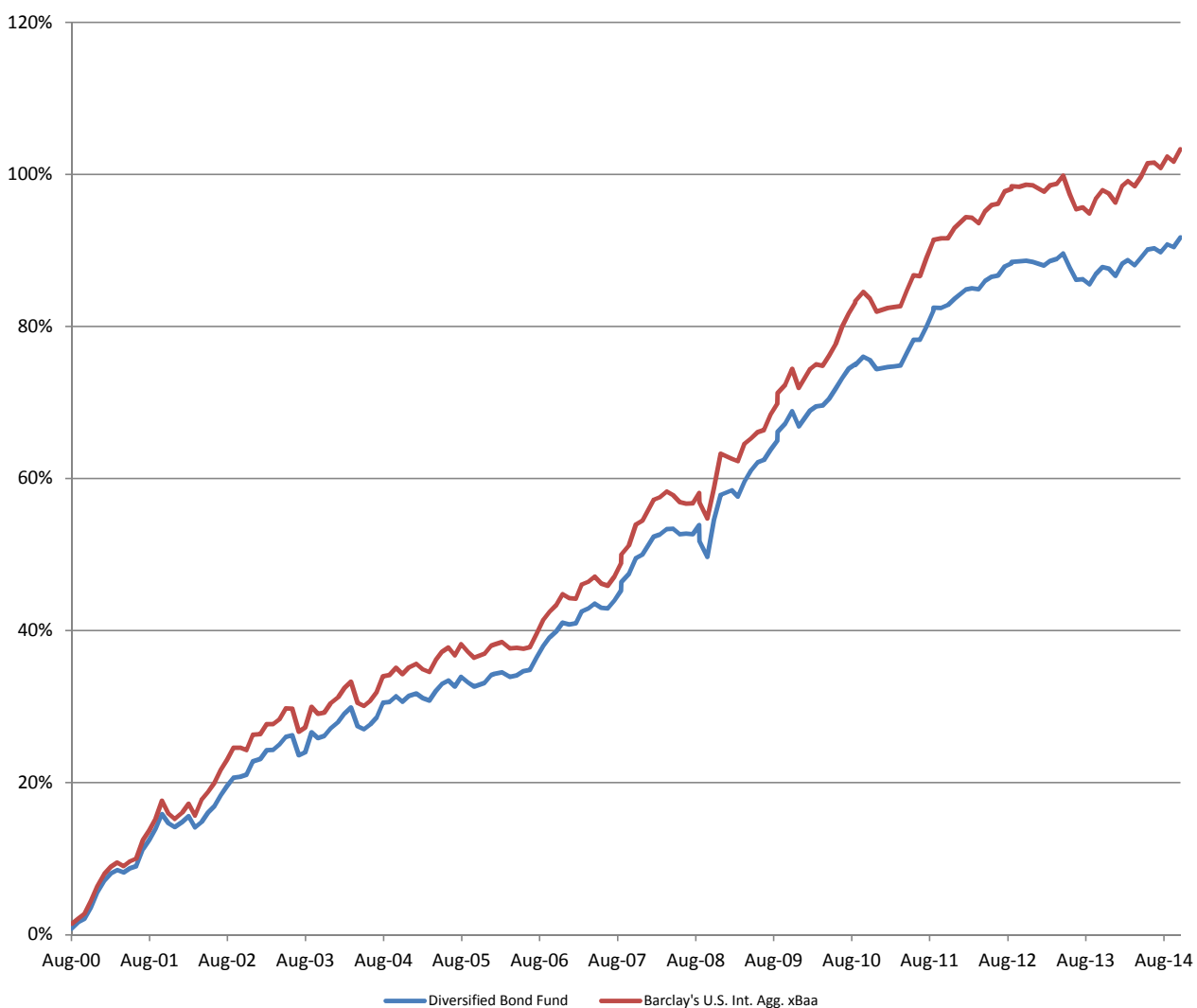
Diversified Bond Fund

Acct. # 2658063

As of October 31, 2014

	<i>Latest Month</i>	<i>Current Quarter</i>	<i>Year to Date</i>	<i>One Year</i>	<i>Three Year</i>	<i>Five Year</i>	<i>Since Inception*</i>
Diversified Bond Fund	0.66%	0.66%	2.71%	2.08%	1.67%	2.77%	4.67%
Barclays U.S. Int. Agg xBaa	0.81%	0.81%	3.56%	2.70%	1.99%	3.36%	5.10%
<i>Difference</i>	-0.15%	-0.15%	-0.85%	-0.63%	-0.32%	-0.59%	-0.43%

Cumulative Return



*Spliced index used. The Barclay's Aggregate was used from August 2000 to December 2000, the Barclay's Aggregate xBaa was used from July 2000 to December 2001, thereafter the Barclay's U.S. Intermediate Aggregate xBaa index has been used.