

## SUMMARY REPORT

### *Diversified Bond Fund-QED*

Acct. # 000585726

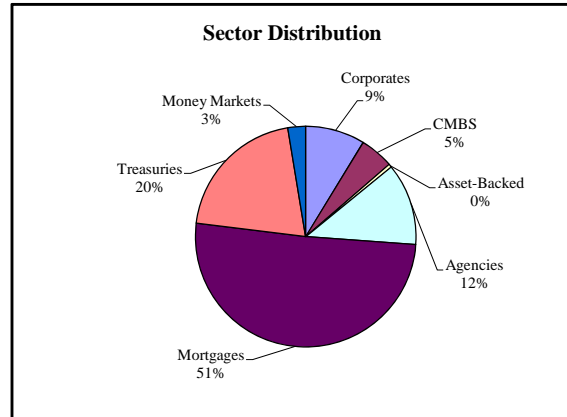
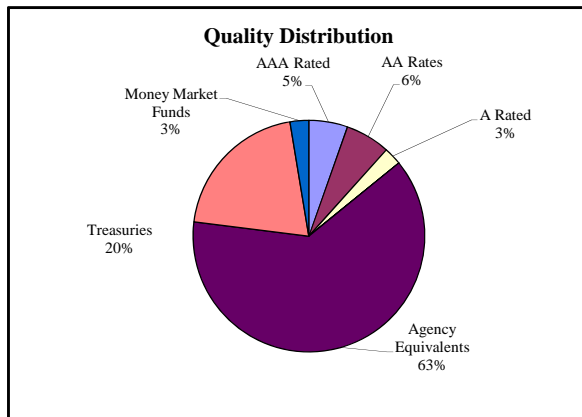
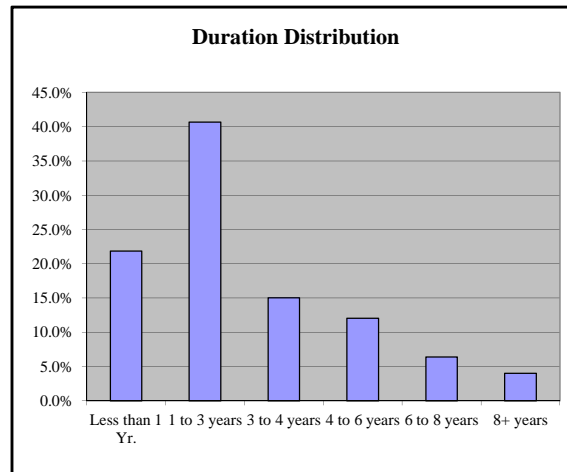
December 31, 2011

	Div. Bond Portfolio	Barclay's Cap. Int. Agg. Index *
Month Total Return	-0.72%	-0.94%
Month Total Return (Incl. Cash)	-0.70%	N/A
Fiscal Year to Date	0.73%	1.10%
Fiscal Year to Date (Incl. Cash)	0.67%	N/A
Calendar Year to Date	4.75%	5.83%
Calendar Year to Date (Incl. Cash)	4.49%	N/A
Wgtd. Avg. Coupon	3.9%	3.9%
Current Yield	3.8%	3.7%
Yield to Maturity	2.3%	2.5%
Wgtd. Avg. Maturity	3.7	4.5
Effective Duration	2.9	3.7
Number of securities	78	N/A
Portfolio Size (millions)	\$ 430.3	N/A
Wgtd. Avg. Quality	AAA+	AAA+

\* A or Better Credit Component

\*\* January Index Returns are estimated

Note: For mortgage securities, average life is used as a proxy for maturity.



**Prior Month Attribution:**

Month Total Return	-0.24%
Fiscal Year to Date Return	1.38%
Calendar Year to Date Return	5.23%
Wgtd. Avg. Coupon	4.0%
Current Yield	3.8%
Yield to Maturity	2.0%
Wgtd. Avg. Maturity	3.5
Effective Duration	2.6
Number of securities	75
Portfolio Size (millions)	\$ 427.6

**Explanation for significant change in attributes:**