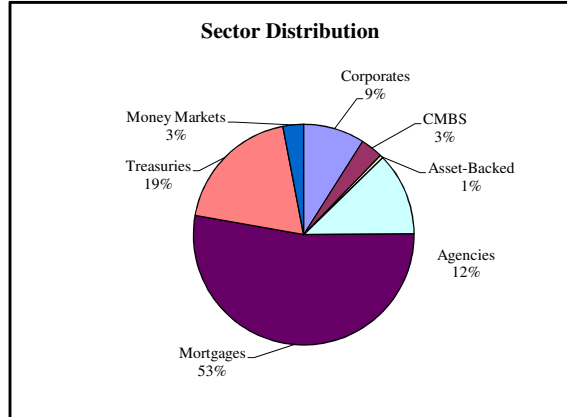
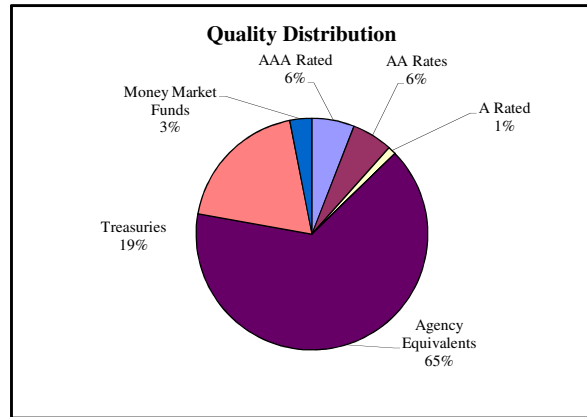
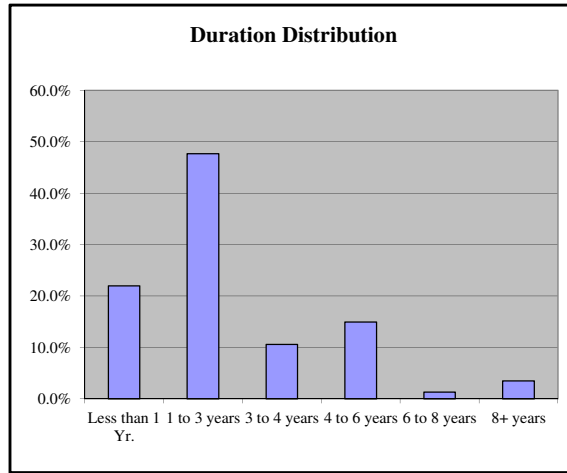


**SUMMARY REPORT**  
***Diversified Bond Fund-QED***  
Acct. # 000585726  
November 30, 2010

|                                    | Div. Bond<br>Portfolio | Barclay's Cap.<br>Int. Agg. Index * |
|------------------------------------|------------------------|-------------------------------------|
| Month Total Return                 | -0.25%                 | -0.47%                              |
| Month Total Return (Incl. Cash)    | -0.24%                 | N/A                                 |
| Fiscal Year to Date                | 1.46%                  | 2.06%                               |
| Fiscal Year to Date (Incl. Cash)   | 1.38%                  | N/A                                 |
| Calendar Year to Date              | 5.51%                  | 6.84%                               |
| Calendar Year to Date (Incl. Cash) | 5.23%                  | N/A                                 |
| Wgt'd. Avg. Coupon                 | 4.0%                   | 3.9%                                |
| Current Yield                      | 3.8%                   | 3.7%                                |
| Yield to Maturity                  | 2.0%                   | 2.1%                                |
| Wgt'd. Avg. Maturity               | 3.5                    | 4.3                                 |
| Effective Duration                 | 2.6                    | 3.5                                 |
| Number of securities               | 75                     | N/A                                 |
| Portfolio Size (millions)          | \$ 427.6               | N/A                                 |
| Wgt'd. Avg. Quality                | AAA+                   | AAA+                                |

\* A or Better Credit Component  
\*\* January Index Returns are estimated

Note: For mortgage securities, average life is used as a proxy for maturity.



**Prior Month Attribution:**

|                              |          |
|------------------------------|----------|
| Month Total Return           | 0.61%    |
| Fiscal Year to Date Return   | 1.63%    |
| Calendar Year to Date Return | 5.48%    |
| Wgt'd. Avg. Coupon           | 4.0%     |
| Current Yield                | 3.8%     |
| Yield to Maturity            | 1.9%     |
| Wgt'd. Avg. Maturity         | 3.4      |
| Effective Duration           | 2.5      |
| Number of securities         | 74       |
| Portfolio Size (millions)    | \$ 428.9 |

**Explanation for significant change in attributes:**